



ESTABLISHED 1932

Direct School Admission

Mrs Tina Ng

A Confident Person A Self-directed Learner A Compassionate Leader

Entering a secondary school



PSLE/S1 Posting Process

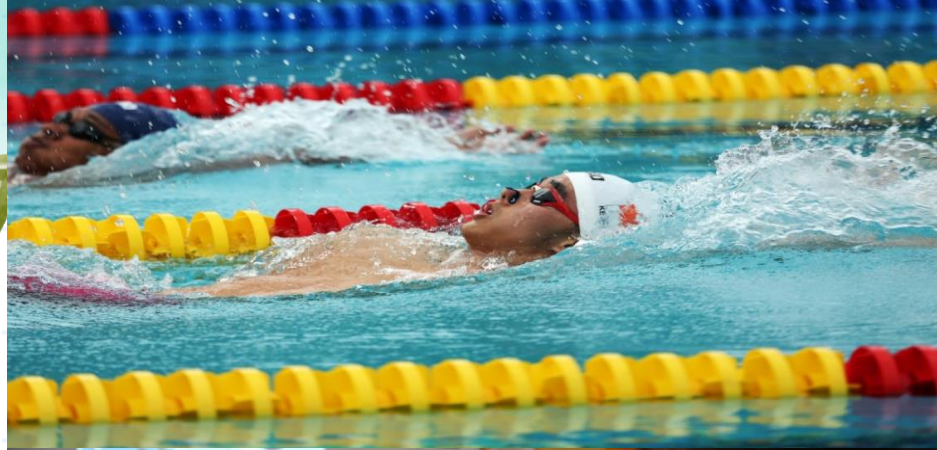
- Based on a student's **PSLE score**
- **Most students enter secondary schools this way**



DSA-Sec

- Based on a diverse range of **talents and achievements in specific academic subjects or non-academic areas, beyond what the PSLE recognises**
- Allows students to **access school programmes to develop their talents**





Direct School Admission for Secondary Schools (DSA-Sec)

What is DSA-Sec?

- DSA-Sec provides P6 students the opportunity to seek admission to a secondary school based on a diverse range of specific academic and non-academic talents and achievements.
- Each participating secondary school offers distinctive programmes and sets its own selection process and criteria to admit students who can be further developed by these programmes.
- DSA-Sec allows students to apply to their preferred secondary schools before taking the PSLE.
- Selection will be based on the pupils' achievements and talents before the PSLE results are released.

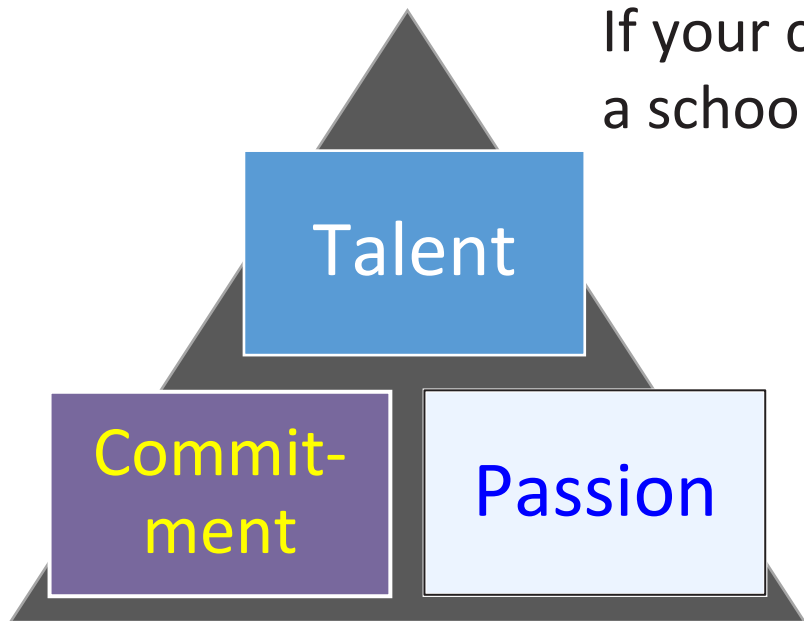
What is DSA-Sec?

- If students are successfully admitted to a secondary school through DSA-Sec, they are **not allowed** to:
 - submit school choices during the Secondary 1 (S1) Posting process
 - transfer to another school as they must honour their commitment to their chosen secondary school for the duration of the programme

Who should apply for DSA-Sec?

- Students who have specific talents and strengths beyond the PSLE (e.g. areas such as sports, performing arts, specific academic subject and leadership), may consider the **DSA-Sec** as an alternative admission pathway to access secondary schools that have talent development programmes in these areas.
- Students may consider applying for DSA-Sec if they are able to identify a school that offers a programme in their area of strength.
- Alternatively, students may continue to participate in the Secondary 1 Posting Exercise in November and be admitted to a secondary school based on their PSLE score.

Is the DSA-Sec right for my child?



If your child has specific **talents** which a school offers the DSA-Sec in

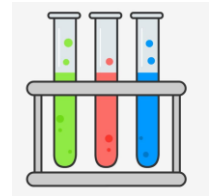
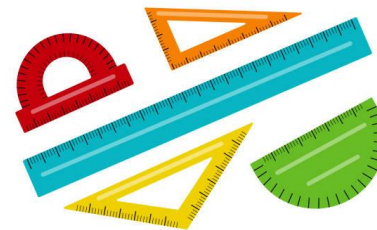
and is **passionate** about and **committed** to developing his/her strengths and interests

DSA-Sec can support his/her development in that talent area.

Talents and Achievements

Primary 6 students can apply for DSA-Sec based on a wide range of talents and achievements in:

- Sports and games
- Visual, literary and performing arts
- Debate and public speaking
- Science and Mathematics
- Languages and Humanities
- Uniformed groups
- Leadership (prefects, CCA leaders)
- Technology



How to apply for DSA-Sec?

- Apply online via DSA-Sec Portal during the application period.
- Only one parent is required to login using Singpass to submit an application.
- Indicate up to 3 choices during the application.
- For each choice, choose a secondary school and a talent area from that school.
- Of the 3 choices, a maximum of 2 choices can be used to apply to the same school (under 2 different talent areas).

What is the timeline for DSA-Sec Exercise?

Apply for DSA-Sec through **DSA-Sec Application Portal**.

Rank your offers, if you receive offers from multiple schools. Submit school preference.

Mid-June to Mid-Sept

Late-November

Early-May to Early-June
(4 weeks)

Late-October

Shortlisting and selection by secondary schools. Each secondary school has different selection criteria for its categories and programmes. Schools will inform you of the selection outcome **by September**.

You will know whether you have been allocated a school through the DSA-Sec, at the same time you receive your PSLE results.

TIMELINE OF THE DSA EXERCISE

There is no change to the application and selection process with the shift to Full SBB.



**BEFORE
MAY**

Explore schools and their talent areas, and shortlist suitable schools



MAY

Apply for DSA via DSA portal



**JUNE TO
SEPTEMBER**

Attend selection trials, interviews and auditions



**BY
SEPTEMBER**

Receive DSA offers if successful Exercise School Preference

More information on the DSA-Sec

- Visit the [MOE DSA-Sec website](#) for important dates and timelines, and for information on the DSA-Sec process.
- The MOE DSA-Sec website also contains information on DSA categories and secondary schools offering them.
- The updated 2024 DSA-Sec information will be provided at a later date. A brochure will be given to you nearer the application period.

- MOE DSA-Sec website:

www.moe.gov.sg/education/admissions/dsa-sec/

- Websites of participating schools through

<http://www.moe.gov.sg/education/admissions/dsa-sec/participating-schools/>

Types of School

**Special Assistance
Programme Schools
(SAP)**

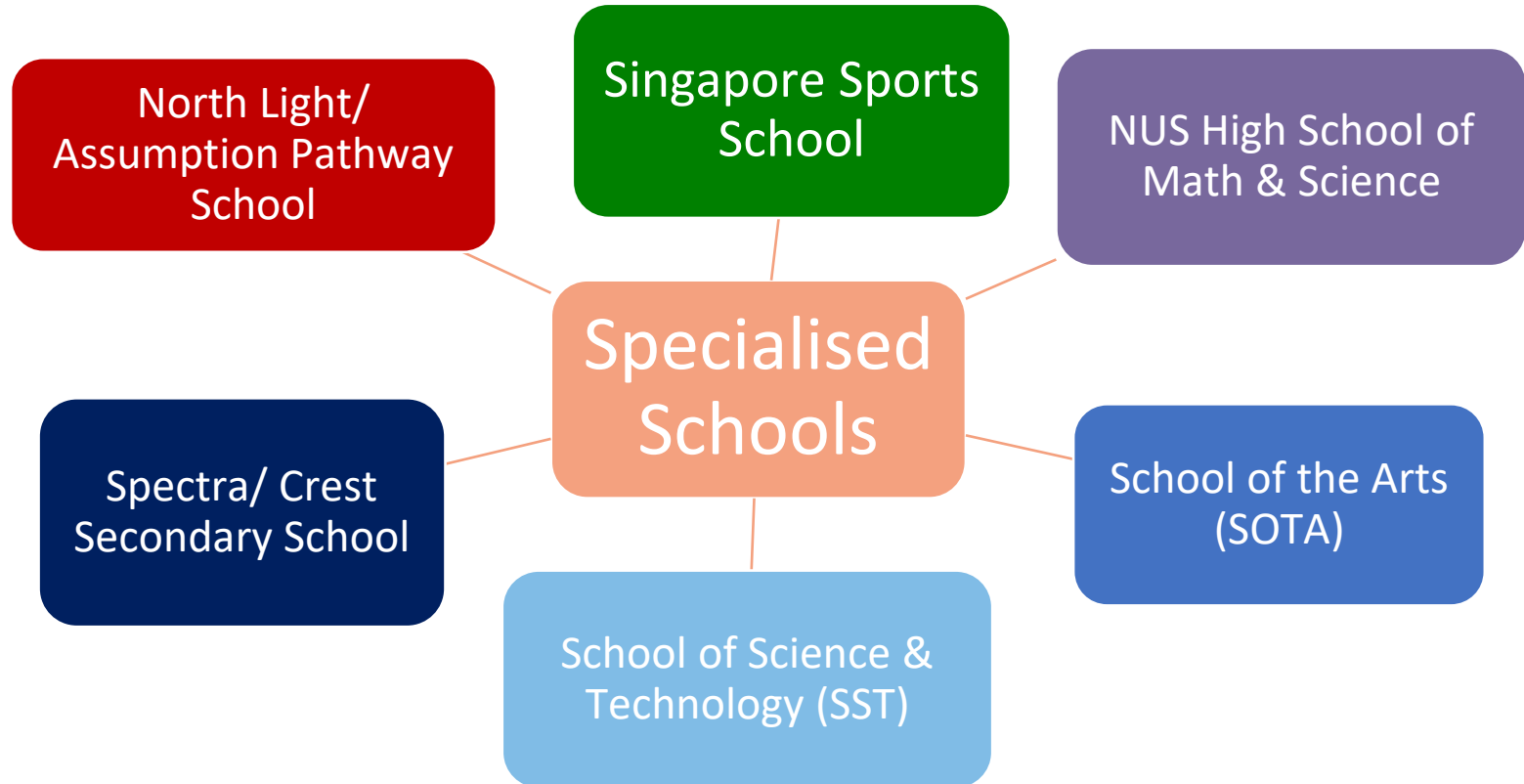
**Integrated
Programme Schools**

Independent Schools

**Autonomous
Schools**

**Schools with
Niche Programmes**

Types of Specialised School



Which school to apply to?

IMPORTANT FACTORS TO CONSIDER WHEN CHOOSING SECONDARY SCHOOLS

01 SCHOOL CULTURE



What is the school's culture and ethos?

02 LEARNING ENVIRONMENT



How do I feel about the school based on what I saw at the Open House?

03 PROGRAMMES



Does the school have programmes I would enjoy?

04 CCAs



Are there CCAs that interest me and can nurture my strengths, abilities and talents?

05 SUBJECTS

What subjects are offered in the school?



06 LOCATION



How long will it take for me to travel to school and back home?

Choosing a Secondary School

- Academic performance of the child
- Distance from home
- Culture and ethos of the secondary schools
- Programmes and schemes in the secondary schools
- Needs of the child
- Cut-off points of secondary schools



Information from MOE regarding the Cut-Off Points of secondary schools will be made available at a later date.

2023

**Pupils admitted to
Secondary Schools
through DSA**

DSA–Sec (2023)

Year	2020	2021	2022	2023
Number of Pupils	31	21	22	37

Talent Areas:

- Academic Subjects
- Sports and Games
- Co-Curricular Activities
- Student Leadership
- Uniform Groups
- Performing Arts
- Visual Arts

BASKETBALL / FOOTBALL

JURONG SECONDARY SCHOOL

UNITY SECONDARY SCHOOL

WESTWOOD SECONDARY SCHOOL

QUEENSWAY SECONDARY SCHOOL

5 STUDENTS

**BADMINTON / TABLE-TENNIS /
CROSS-COUNTRY**

HUA YI SECONDARY SCHOOL

KRANJI SECONDARY SCHOOL

CHIJ ST NICHOLAS GIRLS' SCHOOL

JURONG SECONDARY SCHOOL

6 STUDENTS

VOLLEYBALL

NANYANG GIRLS HIGH SCHOOL

RIVER VALLEY HIGH SCHOOL

BUKIT PANJANG GOVT. HIGH SCHOOL

HUA YI SECONDARY SCHOOL

YUHUA SECONDARY SCHOOL

8 STUDENTS

PERFORMING ARTS

SCHOOL OF THE ARTS (SINGAPORE)
CLEMENTI TOWN SECONDARY SCHOOL
FUHUA SECONDARY SCHOOL
HUA YI SECONDARY SCHOOL
RIVER VALLEY HIGH SCHOOL
JURONG WEST SECONDARY SCHOOL

7 STUDENTS

VISUAL ARTS

SCHOOL OF THE ARTS (SINGAPORE)

JURONG WEST SECONDARY SCHOOL

HUA YI SECONDARY SCHOOL

4 STUDENTS

MATHEMATICS / SCIENCE

SCHOOL OF SCIENCE AND TECHNOLOGY (SINGAPORE)

NUS HIGH SCHOOL OF MATHEMATICS AND SCIENCE

5 STUDENTS

LEADERSHIP / UNIFORM GROUP

AHMAD IBRAHIM SECONDARY SCHOOL

JURONG WEST SECONDARY SCHOOL

2 STUDENTS

Resources

RESOURCES

SCHOOLFINDER



<https://go.gov.sg/schfinder>

WHAT'S NEXT?



<https://go.gov.sg/whats-next-psle>

MYSKILLSFUTURE STUDENT PORTAL



<https://go.gov.sg/exploreschools>

Useful websites

My SKILLS *Future*

[https://www.myskillsfuture.sg/
content/student/en/primary.h
tml
www.myskillsfuture.sg/primar
y](https://www.myskillsfuture.sg/content/student/en/primary.html)

[https://www.moe.gov.sg/
docs/default-
source/document/educat
ion/programmes/social-
emotional-
learning/whatsnextafterp
sle.pdf](https://www.moe.gov.sg/docs/default-source/document/education/programmes/social-emotional-learning/whatsnextafterpsle.pdf)



[https://www.moe.gov.sg/
microsites/ecg-parent-
guide/#p=1](https://www.moe.gov.sg/microsites/ecg-parent-guide/#p=1)

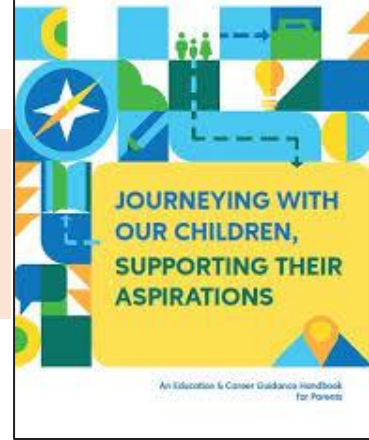
SCHOOLBAG
THE EDUCATION NEWS SITE

[https://www.schoolbag.sg/Schoolbag
portal](https://www.schoolbag.sg/Schoolbagportal)



Ministry of Education
SINGAPORE

[https://www.moe.gov.sg/educa
tion/national-examinations/](https://www.moe.gov.sg/education/national-examinations/)





Thank you